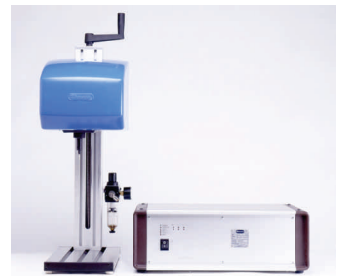




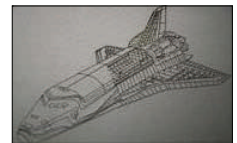
# Pin Marking Equipment

**Enabling you to Mark, Identify, and Track parts**



## CNC Controlled Pin Markers

- Rugged industrial machines, X-Y axis linear guides w/steel reinforced belts
  - Mark text - logos - dates - times using Windows based software
  - Mark on aluminum, steel (to RC62), stainless, copper, and brass
  - Mark castings, forgings, machined parts, plastic, sheet metal, etc...
- Mark fast & mark deep for maximum viewing after paint or coating process
  - Mark directly on the part or mark tags / labels
    - + / - 3mm surface variation acceptable
      - Flat parts, round parts, tubing
    - Carbide stylus pin can be re-sharpened
      - Easy to setup & easy to use
  - Mark multiple parts in one job using custom fixturing
    - Programmable marking depth



**E.L. SIMETH** CO., INC.  
SINCE 1945

North American Representa-

403 S. Hawley Rd.  
Milwaukee, WI 53214  
Phone: 800-837-9270  
Fax: 414-771-9043  
Web: [www.elsimeth.com](http://www.elsimeth.com)

# MV95 Programmable Pin Marker

The **MV95** programmable computer controlled Pin-Marker offers robust construction for industrial marking applications. The marking head can either be standalone on a base as shown, or mounted in automation equipment for marking during a process. This versatile unit consists of these basic components: Marking Head, Controller, 3mm Carbide Stylus & Holder, StampMetal® Software, Pendant Push Button Control, and all necessary cables. Optional Aluminum Frame & Base, and 6mm Stylus & Holder avail-



We will review system and software requirements for Pentium based desktop or laptop w/RS232 or USB capabilities.

Available in 3 standard size mark areas:  
**80x50mm, 100x80mm, and 200x200mm.**

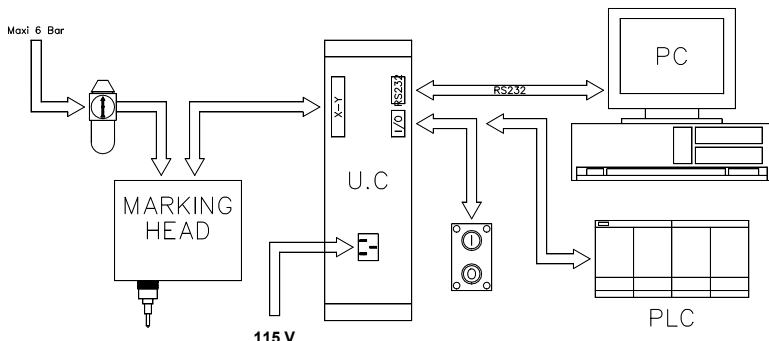
**Marking heads 1100x500mm have been built!**

## Inch & Metric Programming

### MV95 Technical Features

- Multi-Lingual StampMetal® software included
- 2D data matrix, logos, graphics using Windows based software
- PC desktop, laptop or PLC required for interface
- Controller is air cooled for most applications, sealed models are available
- Horizontal - Vertical - Angular - Radial Marking
- Password protection & quick start program startup
- RS232 input / output
- Optional rotary fixture for round parts
- Mark head orientation can be vertical, horizontal, upside down, angular
- Pendant control allows for start, stop, and repeat marking

### Automation for integrating into your application!



Photos below: Marking heads integrated into custom applications. Part to the head or head to the



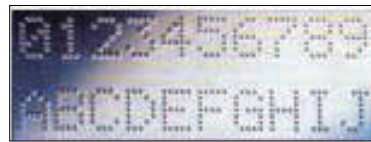
# MV97 Eco-Pin (No PC Required)

The **MV97** Pin Marker offers a robust design ideal for industrial marking applications. This self-contained system provides: **FAST, FLEXIBLE, CONSISTENT, HIGH QUALITY MARKING** solutions.



The marking head is available in 2 sizes:  
**80x50mm and 100x60mm**

## Inch & Metric Programming



### MV97 Technical Features

- Standalone rugged 2-axis marking system
- 4 line LCD display for programming & job modification
- Scroll thru memory, stores up to 15 jobs w/multiple blocks
- Job text up to 31 alpha-numeric characters per line
- Date / Time code function allows many combinations
- Heavy duty base houses aircooled system controller
- Industrial membrane keyboard keeps out contaminants
- Repeat marking allows for increased productivity
- Horizontal and rotated horizontal marking



**Call for a demonstration: 800-837-9270**

# Value Added Features!



**3mm stylus**



**Cast-Iron Base**

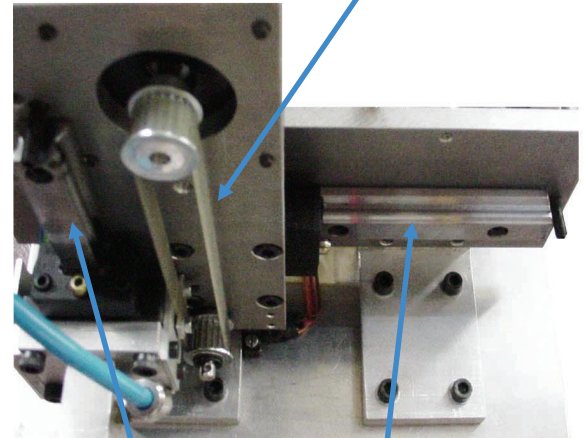
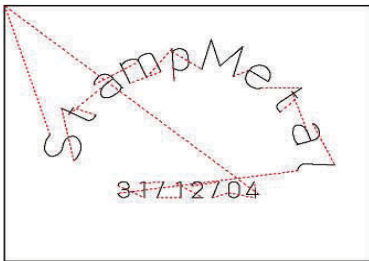


**6mm stylus**

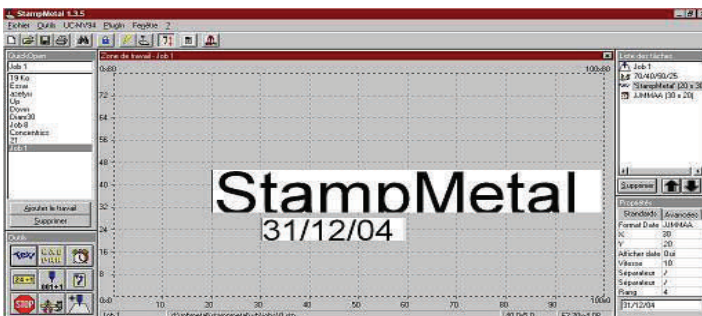
**Steel Reinforced Belts**



**StampMetal**



**Heavy-Duty Linear Guides**



**Call for demonstrations, sales, and support!**

**North American Representative:**



**403 S. Hawley Rd. Milwaukee, WI 53214**

**Phone: 800-837-9270**

**Fax: 414-771-9043**

**Web: [www.elsimeth.com](http://www.elsimeth.com)**